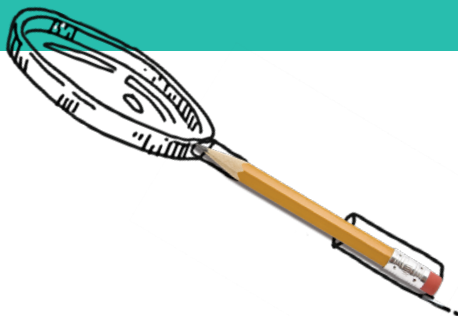


## HAVE YOUR COMPUTER NETWORK AUDITED BY PROFESSIONALS

For organizations with a complex technology infrastructure, getting detailed information about the individual elements, configurations and protocols of their computer network has always been a daunting and time-consuming task. That is why most of these organizations do not have up-to-date information about their network structure and communication flows readily available.



Don't waste the limited capacity of your staff whose role is to keep your IT system running. Put your network audit in the hands of professionals.



## WHY A NETWORK AUDIT IS IMPORTANT?

Detailed network documentation, including a complete inventory, is crucial for IT managers and specialists responsible for network operation and development whenever you intend to:

- **upgrade the technology infrastructure** or introduce a new system
- **change a supplier** or hand IT over to an outsourcing partner
- **plan any investments** in information and communication technology upgrades
- **quickly and easily verify** if operators provide the contractually agreed level of service at your branch offices
- **address recurrent problems** or sudden failures of the computer network

## WHY IT IS DIFFICULT TO AUDIT NETWORKS INTERNALLY?

Conducting a comprehensive **in-depth audit of the network infrastructure** solely with in-house staff is not an easy task. This is due to lack of human resources, time, and, last but not least, money:



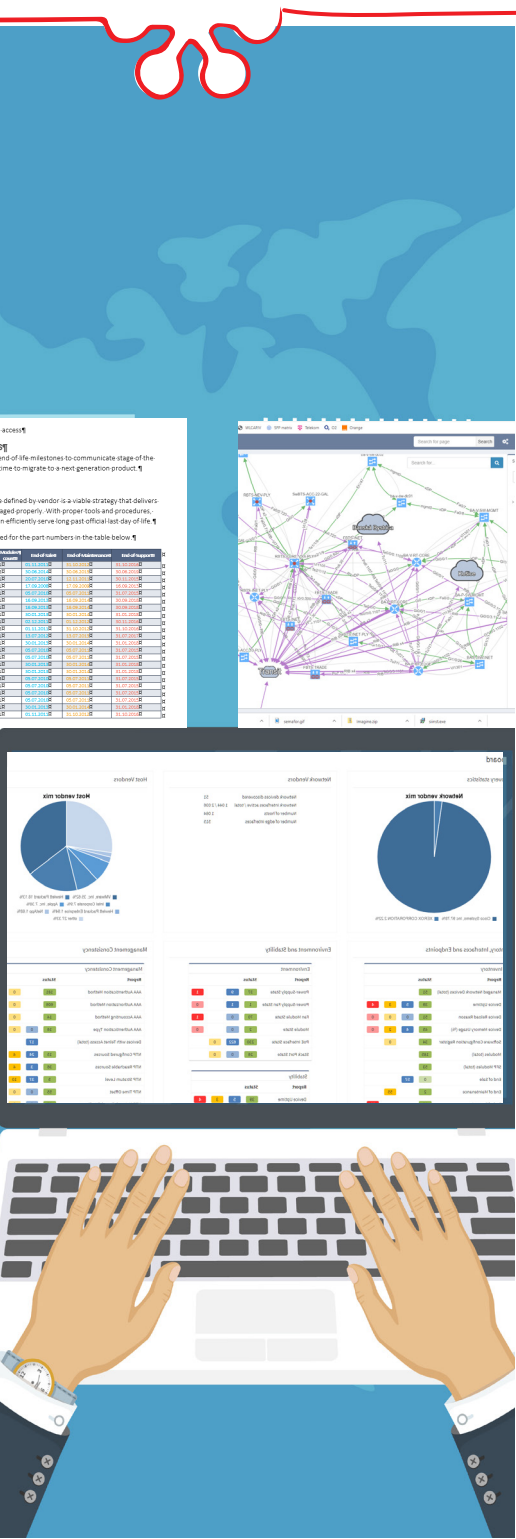
**IT professionals tend to be busy** with the day-to-day operation of IT systems.



Without special software tools, network auditing is **time-consuming** and may **fail** to provide the necessary **level of detail**.



A detailed network audit **using only human resources** (technical specialists) without the use of any specialized software may be **costly** due to the **time-intensity** of the task.



## WHAT WE OFFER?

We provide trained professionals with extensive experience in designing, building, operating, and auditing network infrastructure.

With no disruption to your network traffic and risk to your data, we deploy a state-of-the-art **IP Fabric audit tool** that automates the deep network analysis.

You get a clear and easy-to-read report with detailed information about your network structure and topology, including the configurations and protocols used.

We provide you with advice and recommendations on how to increase efficiency and security, and how to upgrade your network infrastructure if necessary.

To conduct the audit, minimal cooperation is required on your part. We can either use your hardware or deploy the IP Fabric on our server, which would be conveniently integrated into your existing infrastructure.

## WHY SOITRON?

**GUARANTEED RESULTS** – We guarantee the successful implementation of the audit, including visualization and technical documents.

**STATE-OF-THE-ART KNOW-HOW** – Based on the audit results, our experts will identify technological weaknesses, vulnerabilities, and other risks in your network infrastructure and provide recommendations for any redesign or further development.

**VAST EXPERIENCE** – We are a strong player in the IT market with nearly thirty years of experience in providing network solutions. We have implemented hundreds of innovative projects.

## WHAT DO YOU GET?

- **A complete inventory of all network elements**, including serial numbers and vendor support status (if such functionality is supported by the vendor)
- **A virtual network model** including routing rules, allowing you to do simulations and detect any potential problems before committing to a network change (for example, before physically connecting any new elements)
- **A network topology visualization using dynamic maps and diagrams** exportable to a graphic format
- **Reports** that are easy to understand for non-technical managers
- ITIL-compliant **technical documents**
- **Improved management and network availability through the ability** of the solution to:
  - find differences in configurations of connected devices and elements with insufficient redundancy
  - track any changes in the network by comparing it to historical network snapshots or creating a reference point for tracking any future changes
  - identify critical network elements and set priorities based on the number of users affected
  - export low-level network design for each network segment with the details required for network reconstruction

## Soitron, s.r.o., a member of the Soitron Group

Soitron is a Central European integrator operating in the IT market since 1991. The company's philosophy is to constantly move forward, and that is why it is a leader in implementing unique technologies and innovative solutions. It offers its clients products and services in the field of robotization and process automation, artificial intelligence, the Internet of Things (IoT), IT infrastructure, communication and cloud solutions, IT security, IT services and outsourcing, IT advisory and applications, and IT department digitalization. Its product portfolio includes smart police car solutions – Mosy and cyber security services – Void Security Operations Center. Soitron, s.r.o. is a part of the Soitron Group and employs more than 800 international experts. The group brings together professional teams in Slovakia, the Czech Republic, Romania, Turkey, Bulgaria, Poland, and the UK.